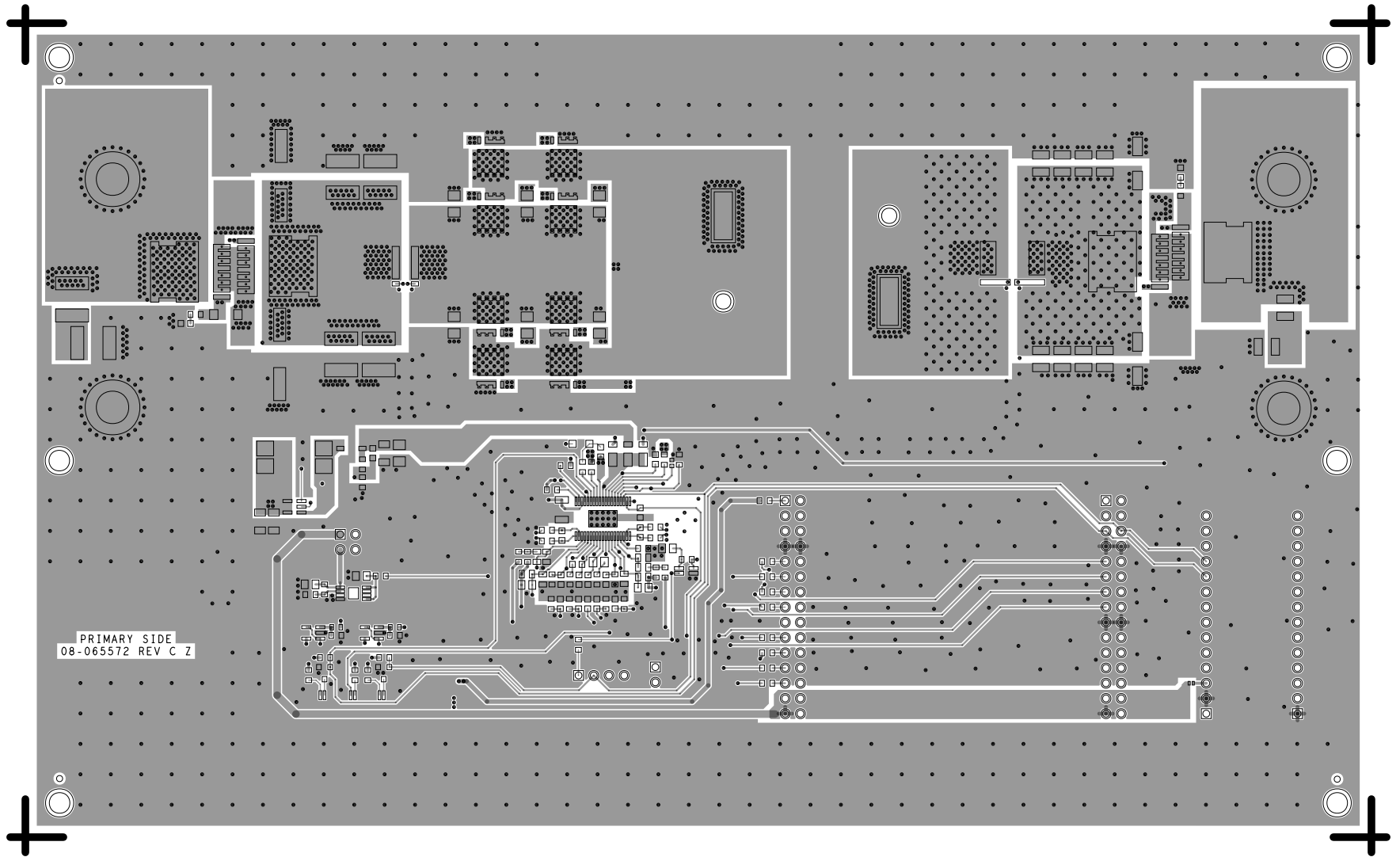


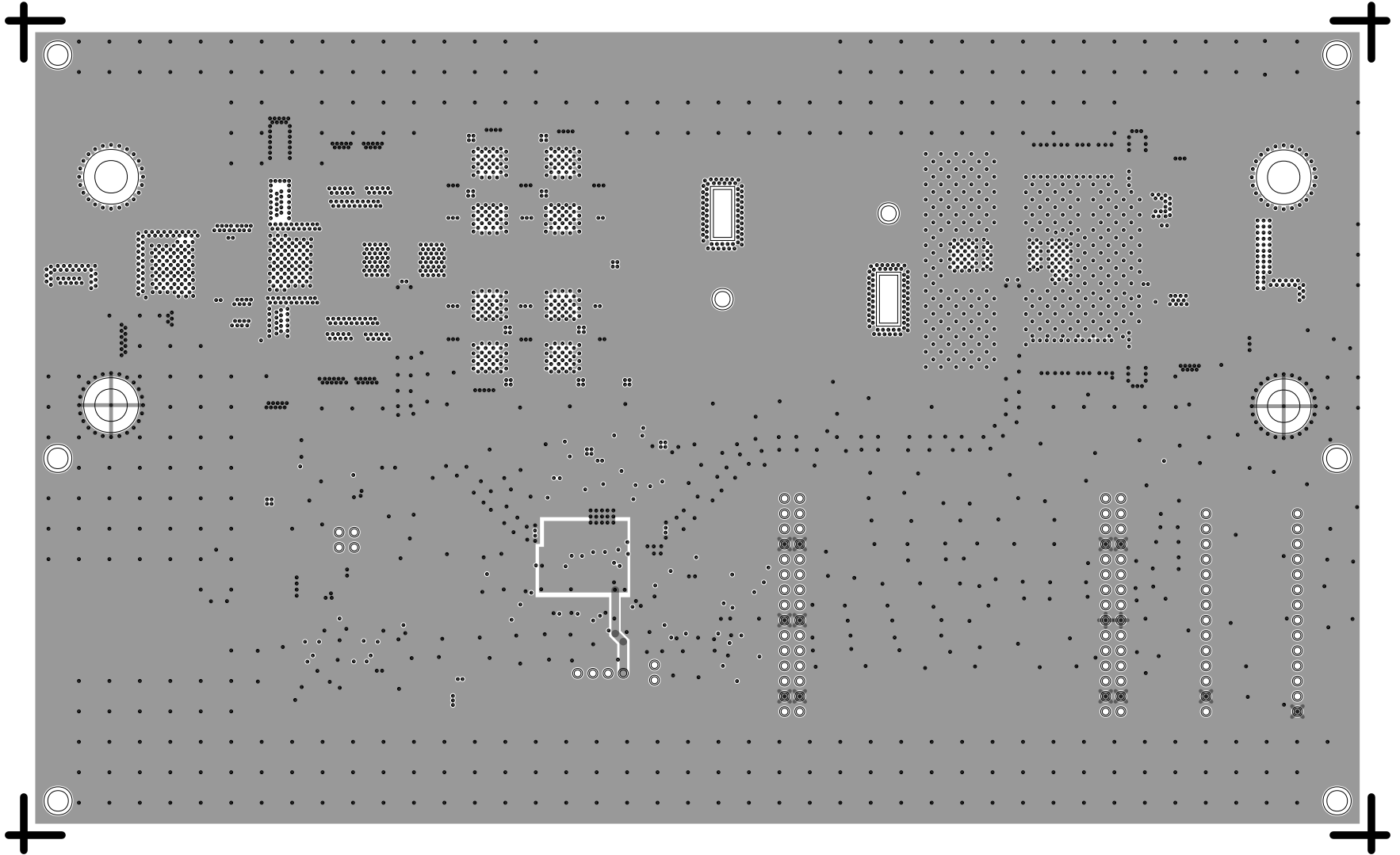
SECONDARY SIDE

<div><div><div></div></div><div>ANALOG DEVICES</div></div> <div>WWM DIVISION 804 WOBURN STREET WILMINGTON, MA 01887</div>			
SIZE	FSCM NO	DRAWING NUMBER	REV
D	24355	01-065572	C1
SCALE	1/1	SHEET 2 OF 2	

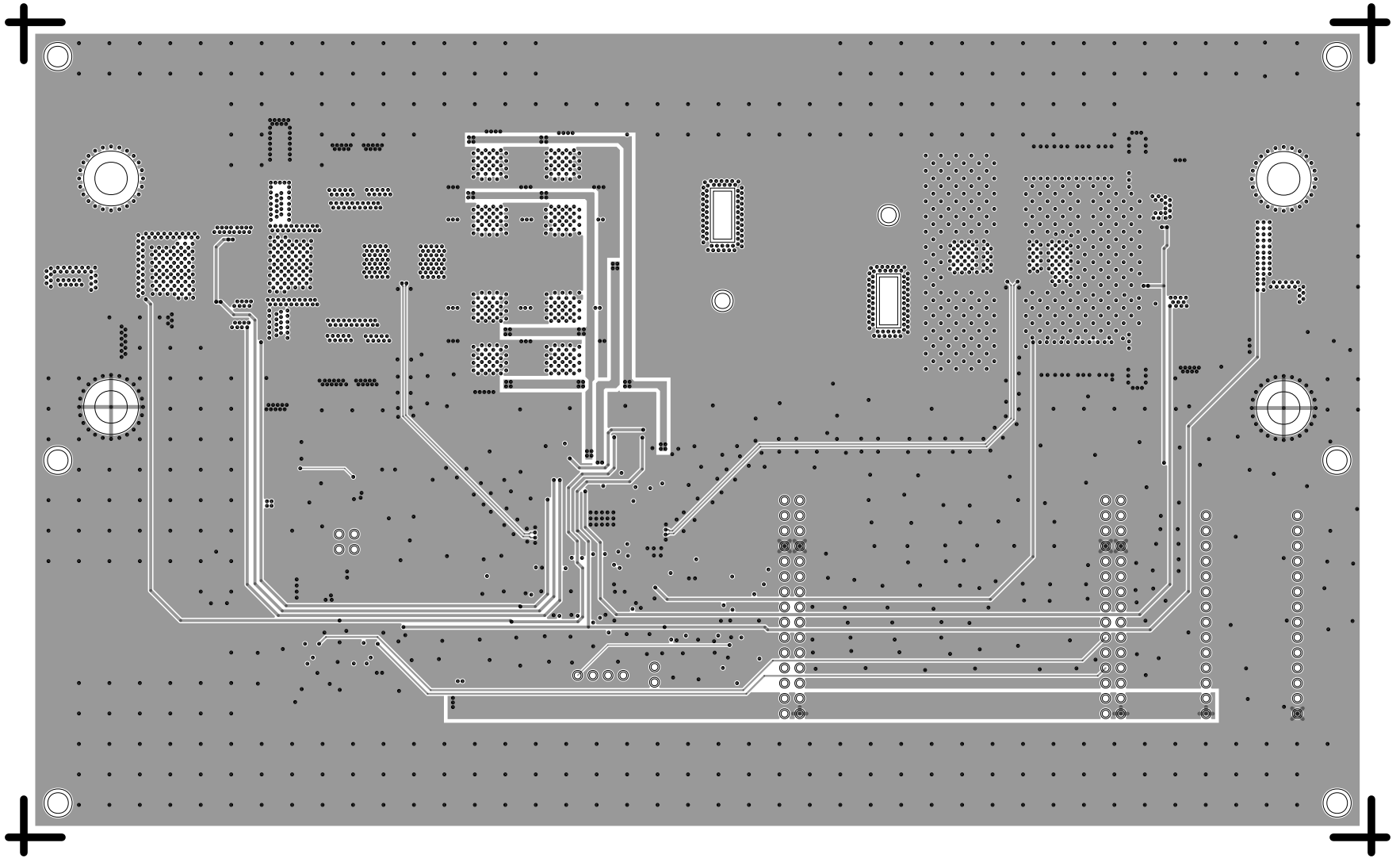
L1 PRIMARY
08-065572-01
REV C1



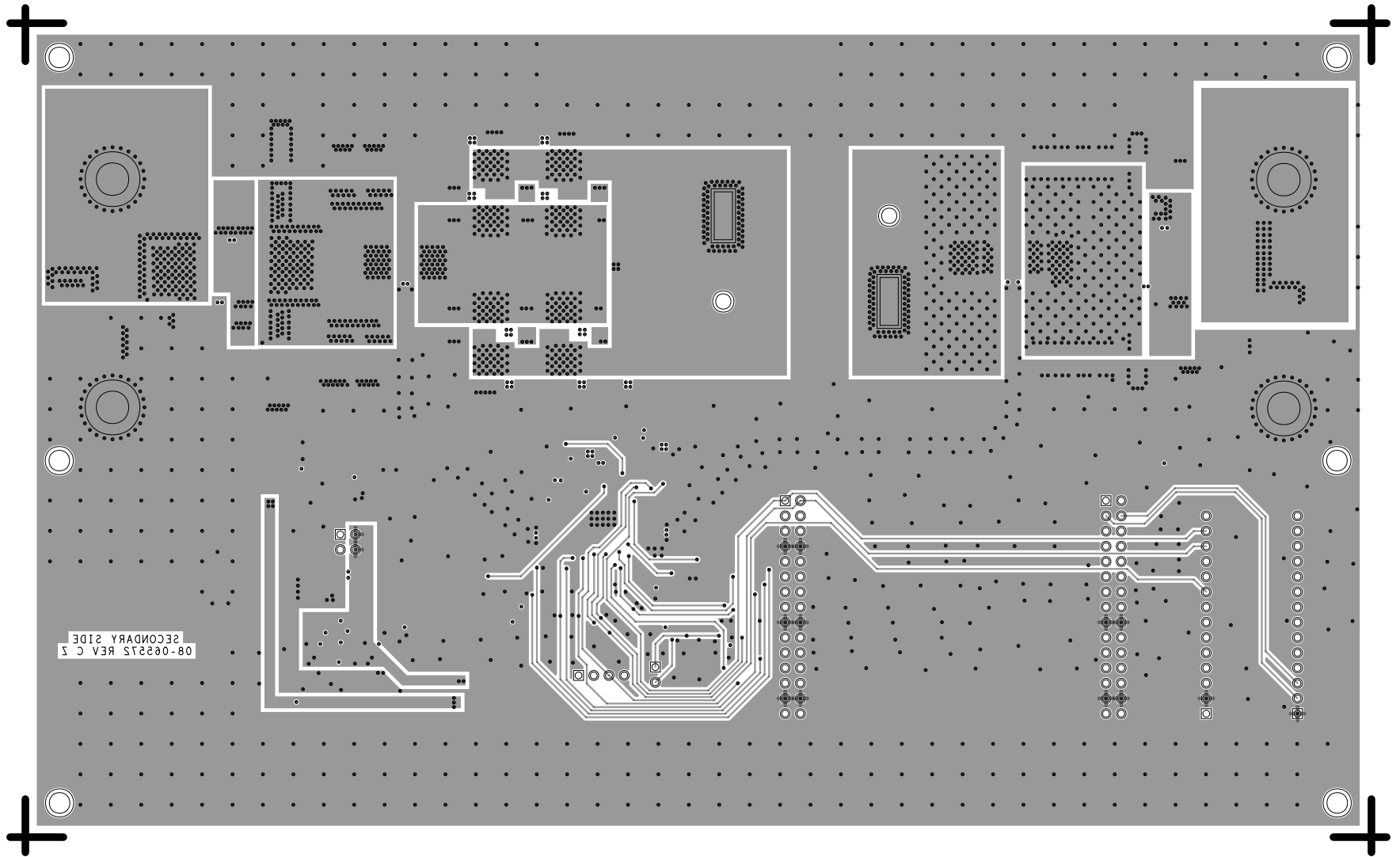
L2 GND
08-065572-07
REV C1



L3 PWR
08-065572-08
REV C1



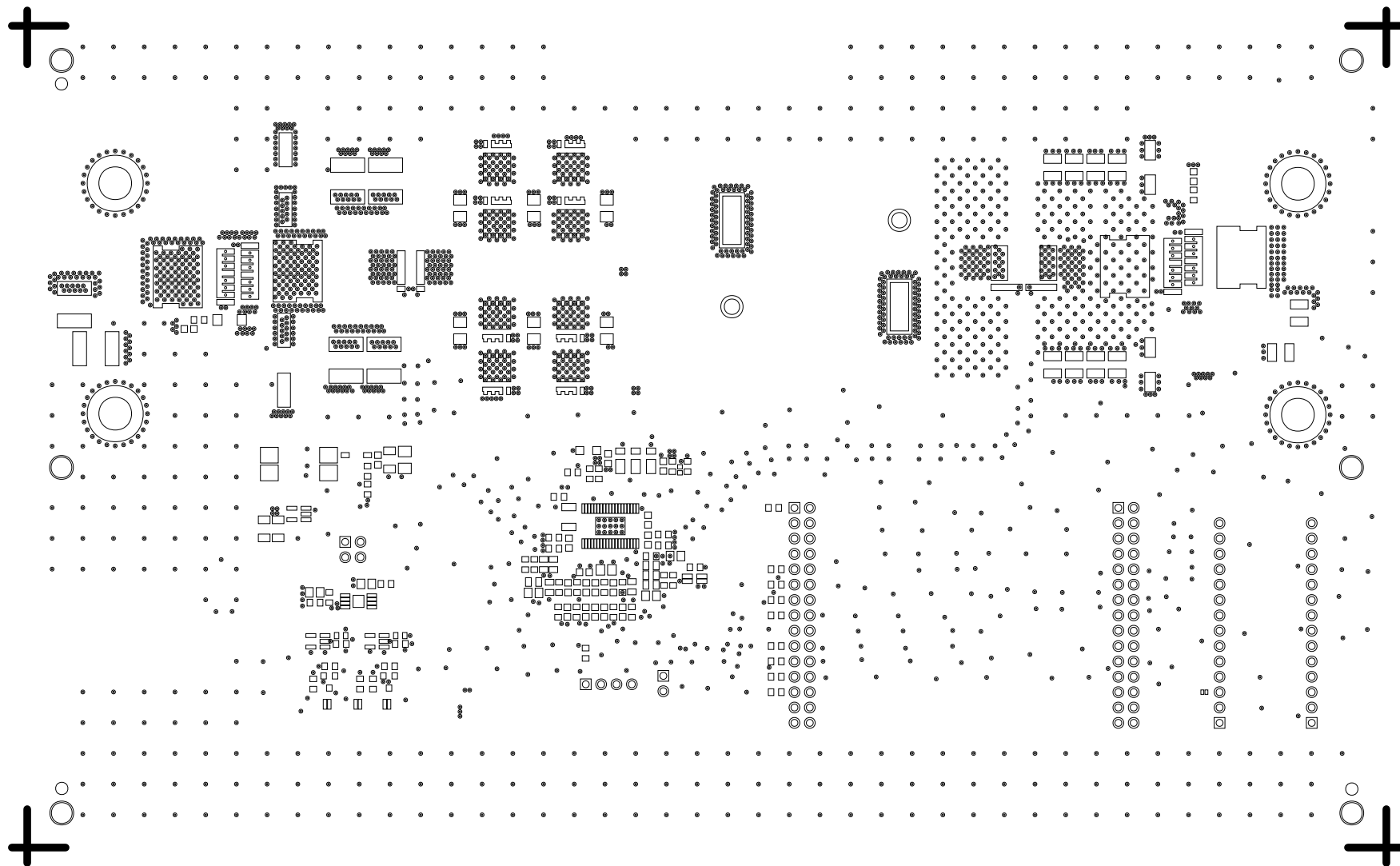
L4 SECONDARY
08-065572-02
REV C1



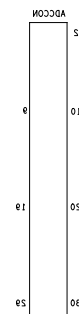
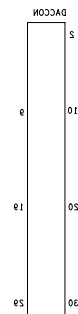
+



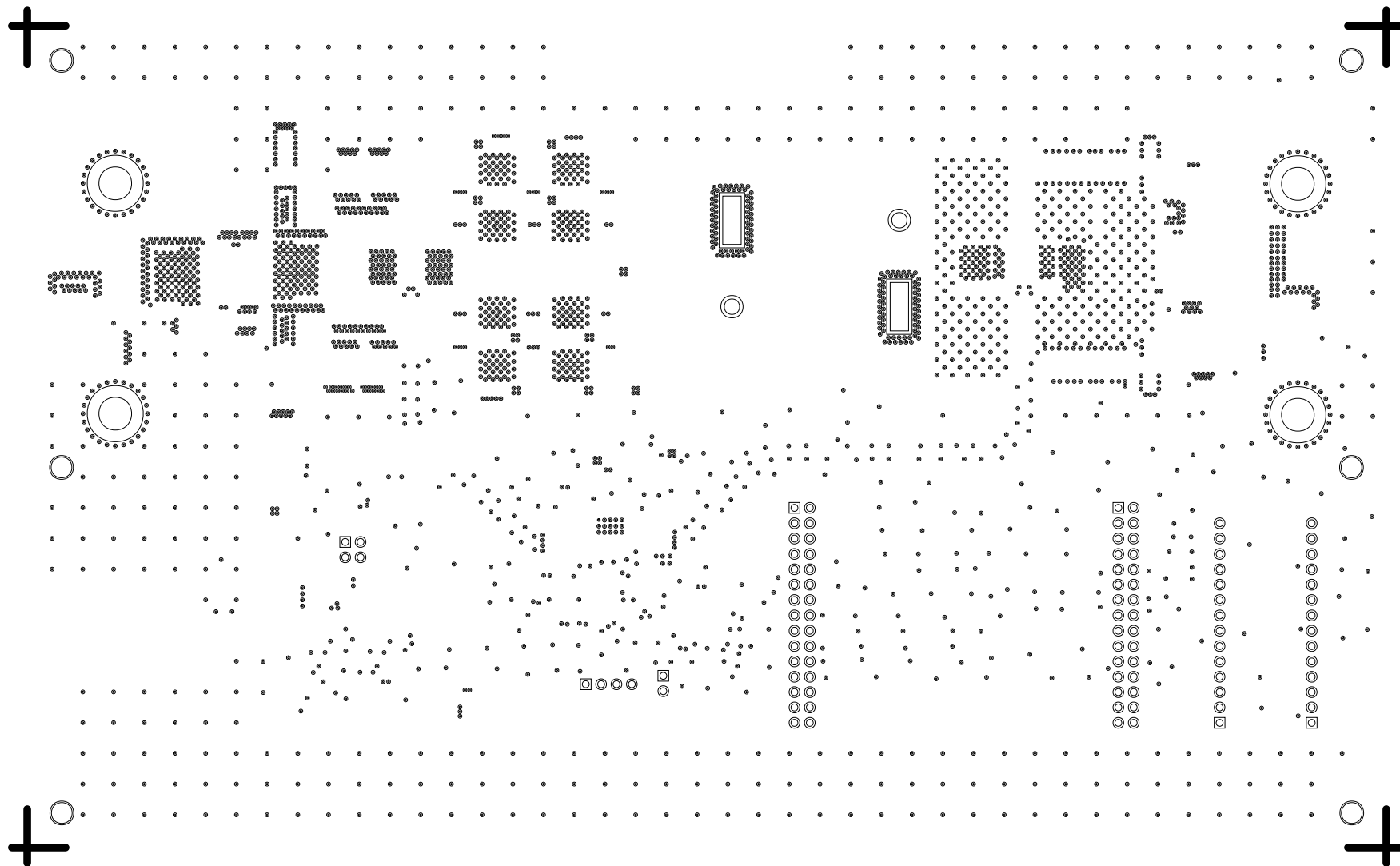
SOLDERMASK PRIMARY
08-065572-04
REV C1



SILKSCREEN SECONDARY
08-065572-05
REV C1



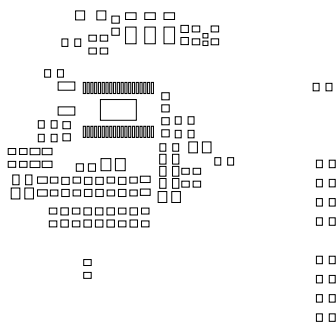
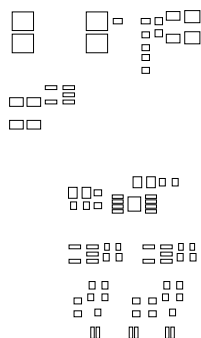
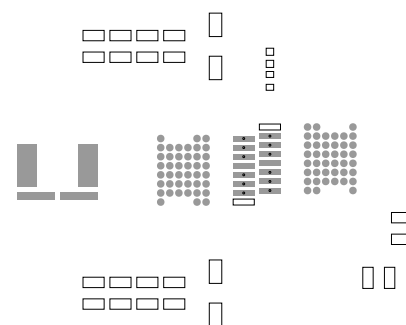
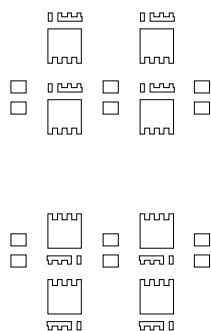
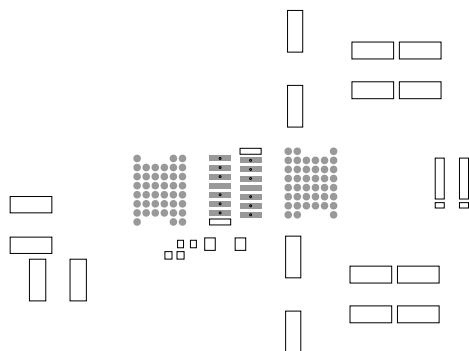
SOLDERMASK SECONDARY
08-065572-06
REV C1



PASTEMASK PRIMARY
08-065572-09
REV C1



o

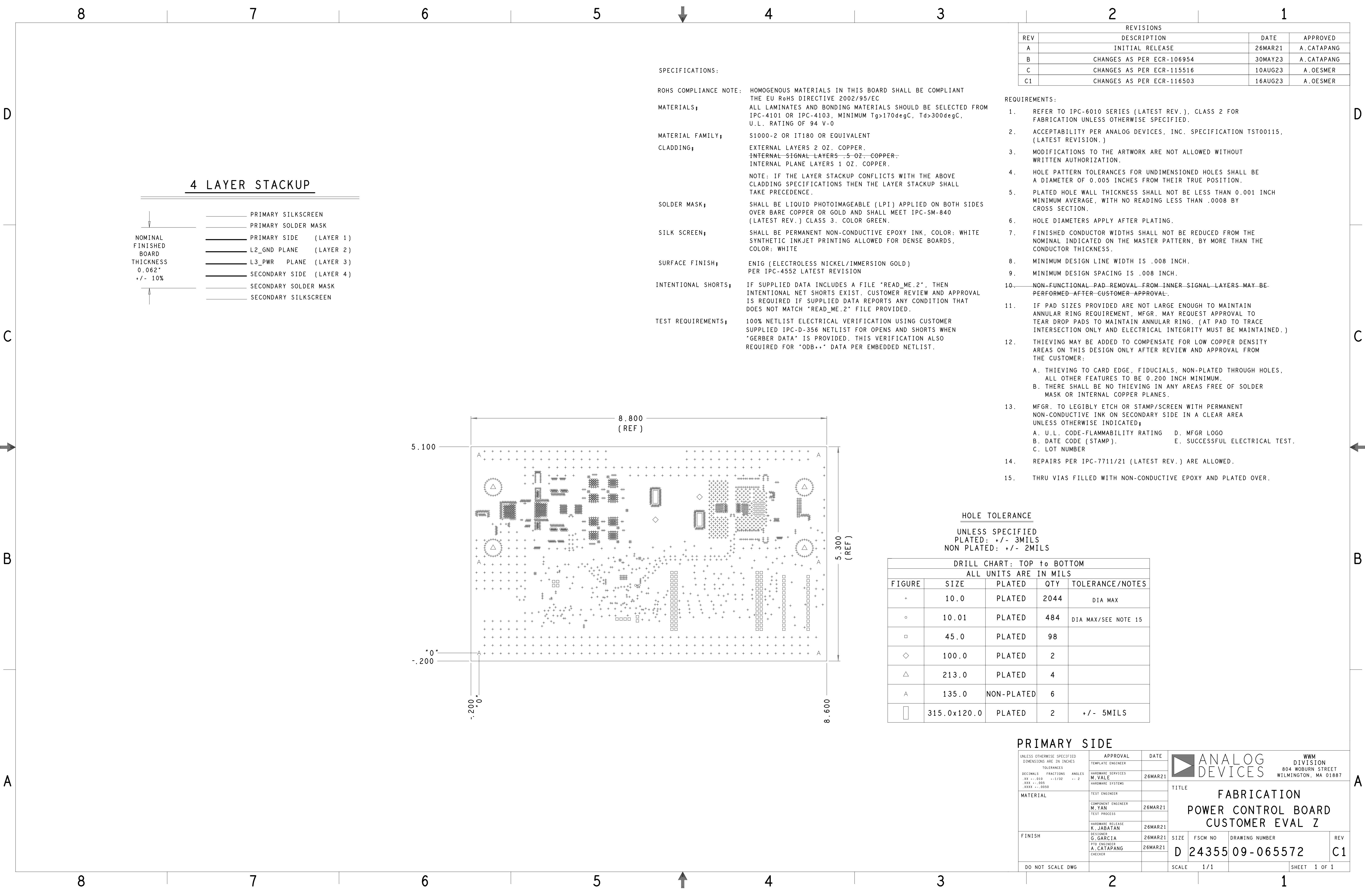


oo



o

o



REVISIONS			
REV	DESCRIPTION	DATE	APPROVED
A	INITIAL RELEASE	26MAR21	A.CATAPANG
B	CHANGES AS PER ECR-106954	30MAY23	A.CATAPANG
C	CHANGES AS PER ECR-115516	10AUG23	A.OESMER
C1	CHANGES AS PER ECR-116503	16AUG23	A.OESMER

SPECIFICATIONS:

ROHS COMPLIANCE NOTE: HOMOGENOUS MATERIALS IN THIS BOARD SHALL BE COMPLIANT THE EU RoHS DIRECTIVE 2002/95/EC

MATERIALS; ALL LAMINATES AND BONDING MATERIALS SHOULD BE SELECTED FROM IPC-4101 OR IPC-4103, MINIMUM Tg>170degC, Td>300degC, U.L. RATING OF 94 V-0

MATERIAL FAMILY; S1000-2 OR IT180 OR EQUIVALENT

CLADDING; EXTERNAL LAYERS 2 OZ. COPPER.
INTERNAL SIGNAL LAYERS 5 OZ. COPPER.
INTERNAL PLANE LAYERS 1 OZ. COPPER.

NOTE: IF THE LAYER STACKUP CONFLICTS WITH THE ABOVE CLADDING SPECIFICATIONS THEN THE LAYER STACKUP SHALL TAKE PRECEDENCE.

SOLDER MASK; SHALL BE LIQUID PHOTOIMAGEABLE (LPI) APPLIED ON BOTH SIDES OVER BARE COPPER OR GOLD AND SHALL MEET IPC-SM-840 (LATEST REV.) CLASS 3. COLOR GREEN.

SILK SCREEN; SHALL BE PERMANENT NON-CONDUCTIVE EPOXY INK, COLOR: WHITE
SYNTHETIC INKJET PRINTING ALLOWED FOR DENSE BOARDS, COLOR: WHITE

SURFACE FINISH; ENIG (ELECTROLESS NICKEL/IMMERSION GOLD)
PER IPC-4552 LATEST REVISION

INTENTIONAL SHORTS; IF SUPPLIED DATA INCLUDES A FILE 'READ_ME.2', THEN INTENTIONAL NET SHORTS EXIST. CUSTOMER REVIEW AND APPROVAL IS REQUIRED IF SUPPLIED DATA REPORTS ANY CONDITION THAT DOES NOT MATCH 'READ_ME.2' FILE PROVIDED.

TEST REQUIREMENTS; 100% NETLIST ELECTRICAL VERIFICATION USING CUSTOMER SUPPLIED IPC-D-356 NETLIST FOR OPENS AND SHORTS WHEN 'GERBER DATA' IS PROVIDED. THIS VERIFICATION ALSO REQUIRED FOR 'ODB++' DATA PER EMBEDDED NETLIST.

REQUIREMENTS:

- REFER TO IPC-6010 SERIES (LATEST REV.), CLASS 2 FOR FABRICATION UNLESS OTHERWISE SPECIFIED.
- ACCEPTABILITY PER ANALOG DEVICES, INC. SPECIFICATION TST00115, (LATEST REVISION.)
- MODIFICATIONS TO THE ARTWORK ARE NOT ALLOWED WITHOUT WRITTEN AUTHORIZATION.
- HOLE PATTERN TOLERANCES FOR UNDIMENSIONED HOLES SHALL BE A DIAMETER OF 0.005 INCHES FROM THEIR TRUE POSITION.
- PLATED HOLE WALL THICKNESS SHALL NOT BE LESS THAN 0.001 INCH MINIMUM AVERAGE, WITH NO READING LESS THAN .0008 BY CROSS SECTION.
- HOLE DIAMETERS APPLY AFTER PLATING.
- FINISHED CONDUCTOR WIDTHS SHALL NOT BE REDUCED FROM THE NOMINAL INDICATED ON THE MASTER PATTERN, BY MORE THAN THE CONDUCTOR THICKNESS.
- MINIMUM DESIGN LINE WIDTH IS .008 INCH.
- MINIMUM DESIGN SPACING IS .008 INCH.
- NON-FUNCTIONAL PAD REMOVAL FROM INNER SIGNAL LAYERS MAY BE PERFORMED AFTER CUSTOMER APPROVAL.
- IF PAD SIZES PROVIDED ARE NOT LARGE ENOUGH TO MAINTAIN ANNULAR RING REQUIREMENT, MFR. MAY REQUEST APPROVAL TO TEAR DROP PADS TO MAINTAIN ANNULAR RING. (AT PAD TO TRACE INTERSECTION ONLY AND ELECTRICAL INTEGRITY MUST BE MAINTAINED.)
- THIEVING MAY BE ADDED TO COMPENSATE FOR LOW COPPER DENSITY AREAS ON THIS DESIGN ONLY AFTER REVIEW AND APPROVAL FROM THE CUSTOMER:
A. THIEVING TO CARD EDGE, FIDUCIALS, NON-PLATED THROUGH HOLES, ALL OTHER FEATURES TO BE 0.200 INCH MINIMUM.
B. THERE SHALL BE NO THIEVING IN ANY AREAS FREE OF SOLDER MASK OR INTERNAL COPPER PLANES.
- MFR. TO LEGIBLY ETCH OR STAMP/SCREEN WITH PERMANENT NON-CONDUCTIVE INK ON SECONDARY SIDE IN A CLEAR AREA UNLESS OTHERWISE INDICATED;
A. U.L. CODE-FLAMMABILITY RATING D. MFR LOGO
B. DATE CODE (STAMP). E. SUCCESSFUL ELECTRICAL TEST.
C. LOT NUMBER
- REPAIRS PER IPC-7711/21 (LATEST REV.) ARE ALLOWED.
- THRU VIAS FILLED WITH NON-CONDUCTIVE EPOXY AND PLATED OVER.

HOLE TOLERANCE

UNLESS SPECIFIED
PLATED: +/- 3MILS
NON PLATED: +/- 2MILS

DRILL CHART: TOP to BOTTOM				
ALL UNITS ARE IN MILS				
FIGURE	SIZE	PLATED	QTY	TOLERANCE/NOTES
+	10.0	PLATED	2044	DIA MAX
o	10.01	PLATED	484	DIA MAX/SEE NOTE 15
□	45.0	PLATED	98	
◇	100.0	PLATED	2	
△	213.0	PLATED	4	
A	135.0	NON-PLATED	6	
□	315.0x120.0	PLATED	2	+/- 5MILS

PRIMARY SIDE

UNLESS OTHERWISE SPECIFIED DIMENSIONS ARE IN INCHES TOLERANCES DECIMALS FRACTIONS ANGLES .XX .-.010 .XXX .-.005 .XXXX .-.0050	APPROVAL	DATE	<div><div></div><div>ANALOG DEVICES</div><div>WWM DIVISION 804 WOBURN STREET WILMINGTON, MA 01887</div></div> <div>TITLE FABRICATION POWER CONTROL BOARD CUSTOMER EVAL Z</div> <div>SIZE FSCM NO DRAWING NUMBER REV D 24355 09-065572 C1</div>			
	TEMPLATE ENGINEER					
	HARDWARE SERVICES M.VALE	26MAR21				
	HARDWARE SYSTEMS					
MATERIAL	TEST ENGINEER		DO NOT SCALE DWG	SCALE 1/1	SHEET 1 OF 1	
	COMPONENT ENGINEER M.YAN	26MAR21				
	TEST PROCESS					
	HARDWARE RELEASE K.JABATAN	26MAR21				
FINISH	DESIGNER G.GARCIA	26MAR21				
	PTH ENGINEER A.CATAPANG	26MAR21				
	CHECKER					